

# INSTALLATION MANUAL

# 31093

## Level of Difficulty

Moderate

Installation difficulty levels are based on time and effort involved and may vary depending on the installer level of expertise, condition of the vehicle and proper tools and equipment.

## Weight Carrying Capacity

Gross trailer weight (GTW)	5,000 lbs.
Tongue weight (TW)	500 lbs.
Straight line pull	9,000 lbs.

## Parts List

Item	Qty	Description
1	6	Conical-toothed washer, 9/16"
2	2	Hex bolt, M12
3	4	Hex bolt, M14
4	2	Flange nut, M12
5	4	Flange nut, M14
6	2	Round hole spacer, .188" x 1.25" x 1.50"

## Tools Required

Ratchet	Wrench, 18mm
Torque wrench	Wrench, 19mm
Socket, 18mm	Wrench, 22mm
Socket, 19mm	Wrench, 24mm
Socket, 22mm	Tape measure
Socket, 24mm	Aviation sheers / knife

\* For a tools reference guide visit [curtmfg.com/trailer-hitch-installation](http://curtmfg.com/trailer-hitch-installation)

## ⚠ WARNING

Never exceed the vehicle manufacturer's recommended towing capacity.

## Product Photo



## NOTICE

Visit [www.curtmfg.com](http://www.curtmfg.com) for a full-color copy of this instruction manual, as well as helpful videos, guides and much more!

Before you begin installation, read all instructions thoroughly.

Proper tools will improve the quality of installation and reduce the time required.

This installation requires:

- Fascia trimming
- No drilling

Periodic inspection of the trailer hitch should be performed to ensure all mounting hardware remains tight and structural components are secure.

To help prevent damage to the product or vehicle, refer to the specified torque specifications when securing hardware during the installation process.

## SAFETY INSTRUCTIONS

Safety glasses should be worn at all times while installing this product.

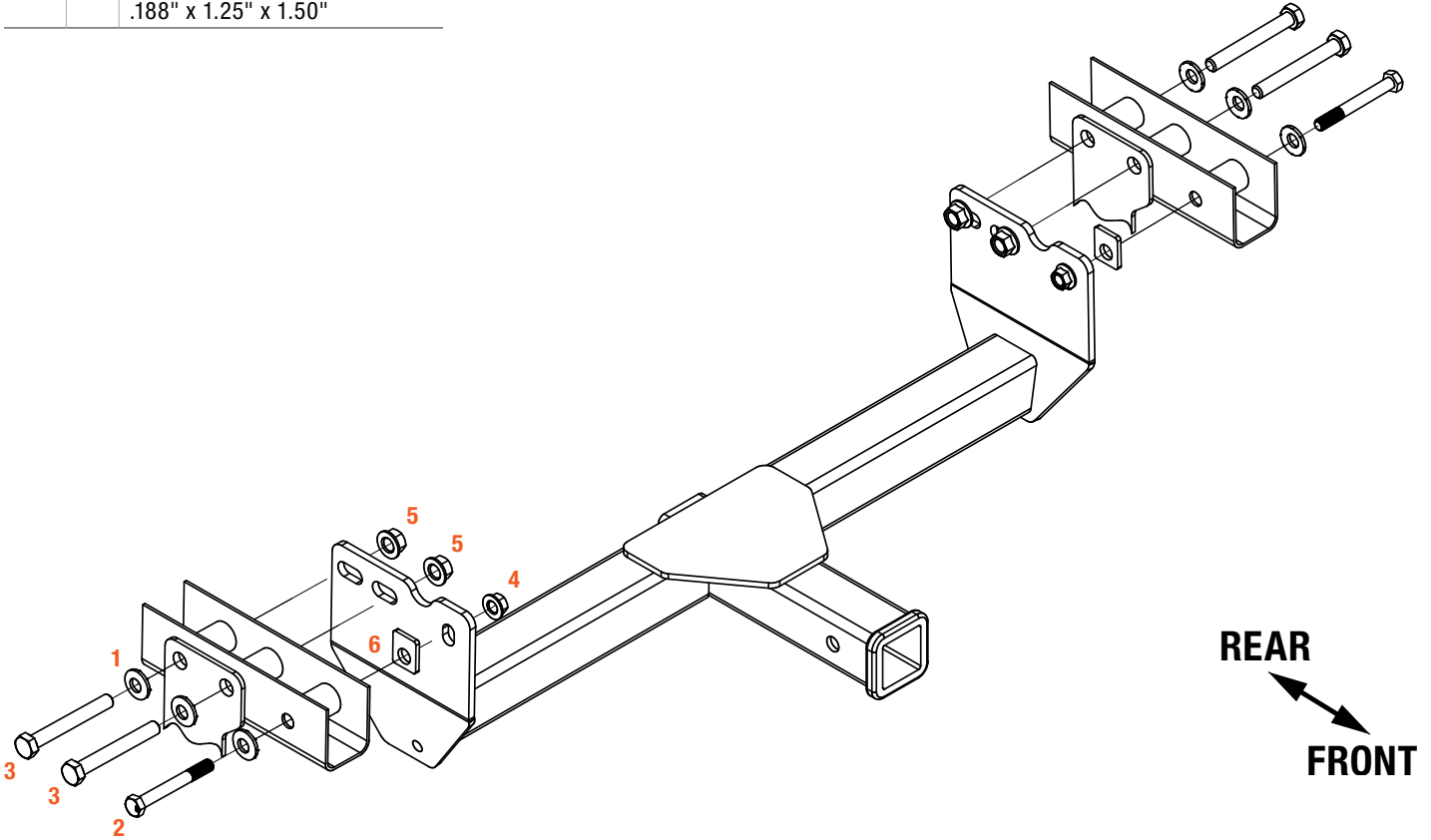
## Product Registration and Warranty

CURT stands behind our products with industry-leading warranties. To get copies of the product warranties, register your purchase or provide feedback, visit: [warranty.curtgroup.com/surveys](http://warranty.curtgroup.com/surveys)

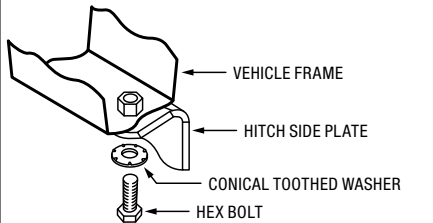
# ASSEMBLY

## Parts List

Item	Qty	Description
1	6	Conical-toothed washer, 9/16"
2	2	Hex bolt, M12
3	4	Hex bolt, M14
4	2	Flange nut, M12
5	4	Flange nut, M14
6	2	Round hole spacer, .188" x 1.25" x 1.50"



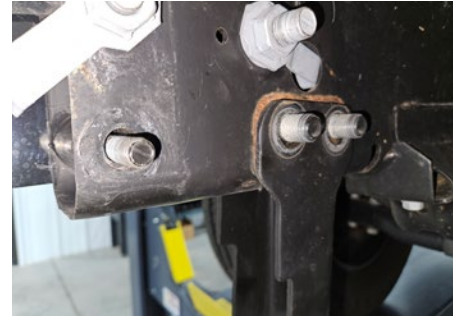
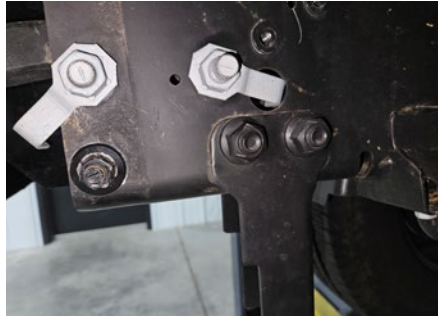
### CONICAL TOOTHED WASHER ORIENTATION



## Step 1

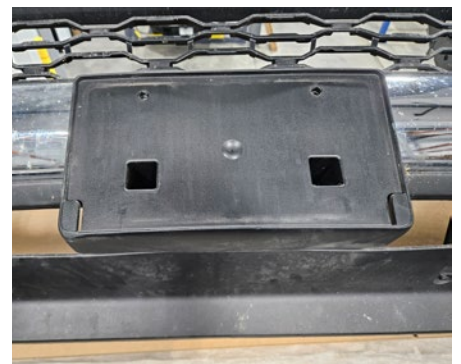
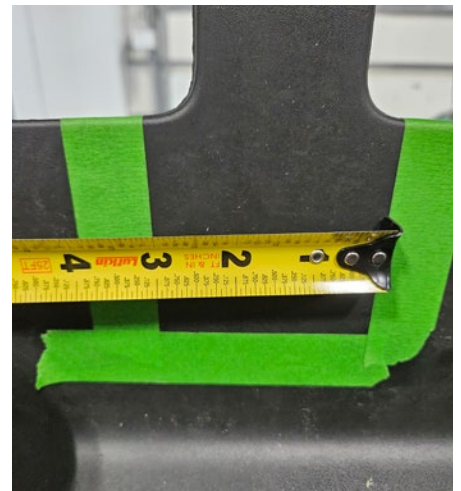
Use a 24mm socket and wrench to remove the two bolts and nuts securing the lower impact bars. If the impact bar is loose when bolts are removed, remove and set aside for reinstallation later. Use an 18mm socket and wrench to remove the bolt and nut in line with the previously removed bolts.

Repeat on the other side of the vehicle and return all original bolts and nuts for vehicle owner.



## Step 2

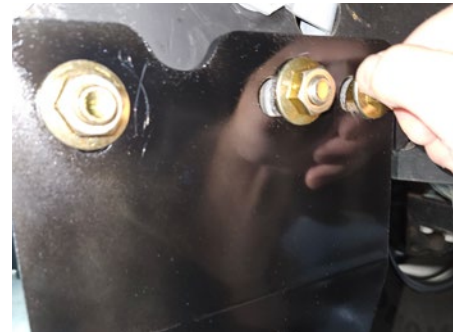
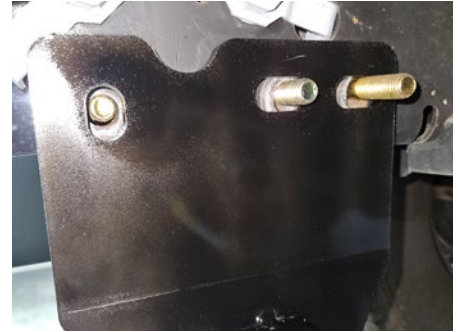
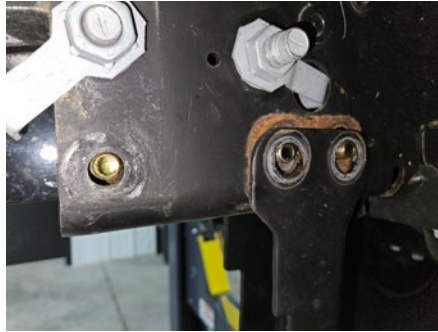
As shown in the diagram, mask the bumper and use a knife or aviation shears to trim the lower plastic opening. Front license plate holder may need to be relocated.



### Step 3

Install the M12, M14 and 9/16" hardware as shown in the diagram into the frame rails, leaving them flush with the interior of the frame so hitch can slide into position.

Raise the hitch into position and install the M14 bolts fully into the frame rails, sliding the spacers between the hitch and frame for the forwardmost mounting location with the M12 hardware. Loosely install the rest of the supplied hardware as shown.



### Step 4

Torque all M14 bolts to 126 ft-lbs.

Torque all M12 bolts to 79 ft-lbs.



## TOWING BASICS & SAFETY INFORMATION

For information on safely towing your trailer, visit [curtmfg.com/understanding-towing](http://curtmfg.com/understanding-towing).